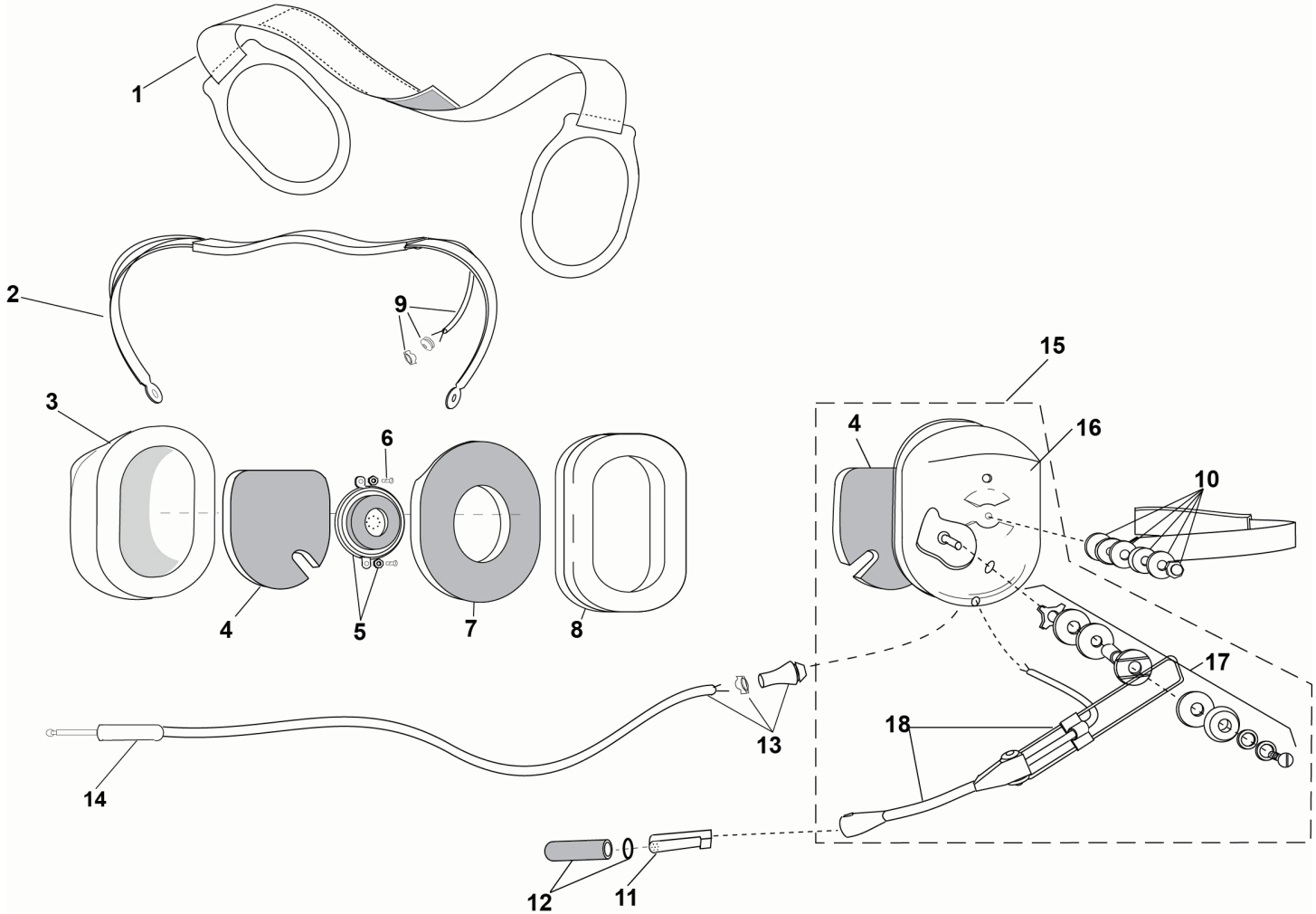


**PARTS LIST
MODEL H3440**



No.	Description	Part No.
1	Support Assembly	10370G-03
2	Spring Assembly	10117G-97
3	Dome, Right	15522P-03
4	Dome Filter (1 each)	11410P-02
5	Earphone Assembly	10376G-17
6	Screw (10/pk)	00023M-07
7	Dome Filter (1 each)	25629P-05
8	Undercut Gel Earseal (pair)	40863G-02
9	Overhead Cord Assembly	22607G-01

No.	Description	Part No.
10	Nut and Washer Kit (10 pk)	12052G-02
11	M-7A Electret Mic	09168P-33
12	Mic Protector Pkg	40062G-02
13	Comm Cord Assy Kit	18028G-09
14	Conn, Elec-Modified	14120P-05
15	Kit, Dome & Mic Boom	40688G-71
16	Left Dome	15522P-07
17	Boom Attachment Kit	12840G-09
18	Hybrid Boom with Cord	18740G-05

ELECTRICAL SCHEMATIC
MODEL H3440

